

TMR NORTH COAST REGION SPEED LIMIT REVIEW CHECKLIST



Manual of Uniform Traffic Control Devices Part 4 Speed Controls
Infrastructure Risk Rating Manual

SITE DETAILS

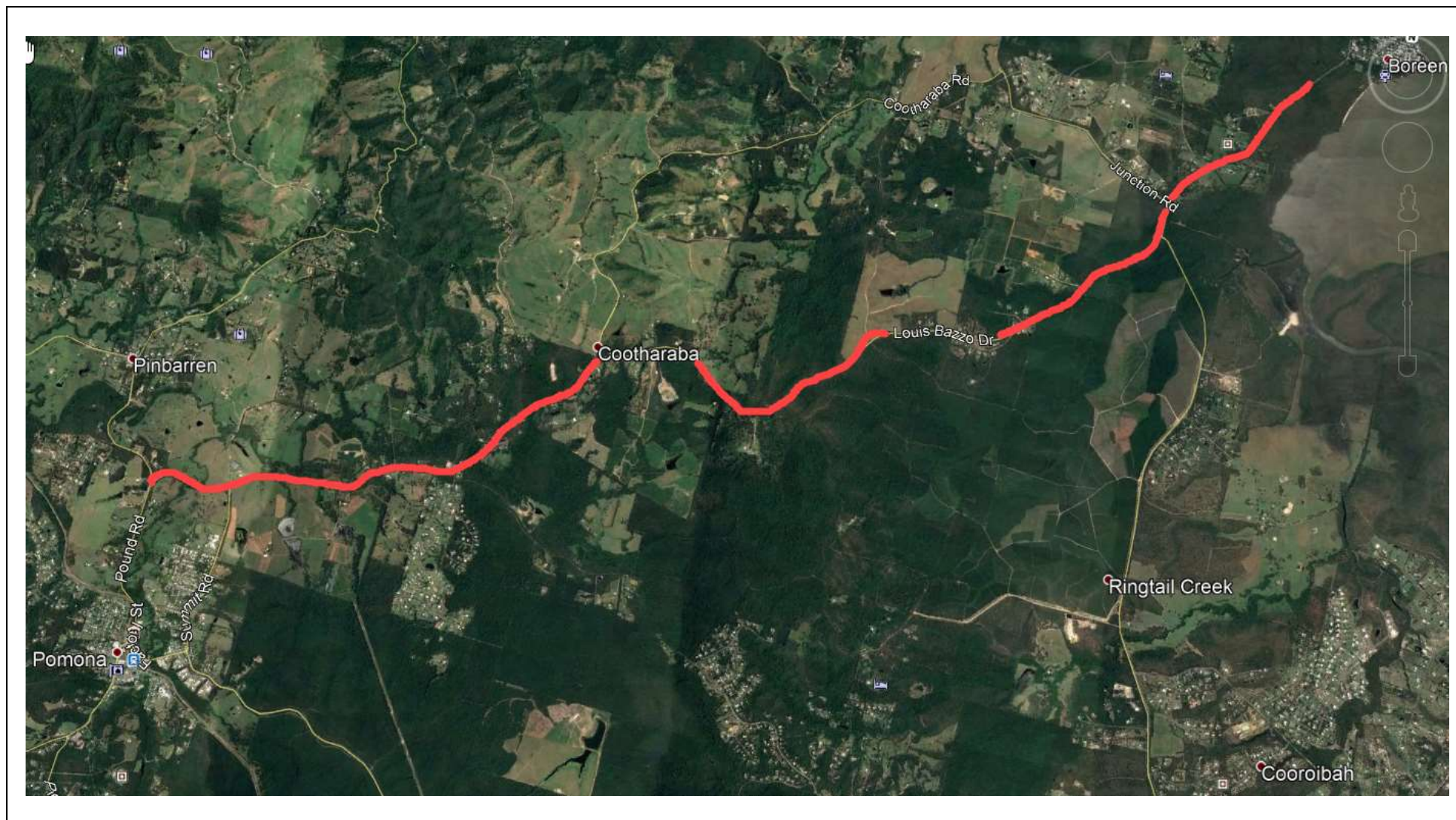
ROAD ID	1412 Boreen Road
TMR REGION	North Coast Region
LGA	Noosa Shire Council
LOCALITY	Boreen Point
REFERENCES	

	LOCATION / REFERENCE POINT	CHAINAGE	LATITUDE	LONGITUDE
START	Intersection with Kin Kin Rd	0.00	-26.347973	152.854825
END	End of 90km/hr Limit	16.85	-26.286679	152.987417



Queensland
Government
Government

LOCALITY MAP



RISK ASSESSED SPEED LIMITS (RASL)

CRASH PERIOD	23/03/2018	to	22/03/2021
---------------------	------------	----	------------

POSTED SPEED LIMIT (km/h)	90
AADT (vpd)	1800
CHAINAGE START (km)	0.000
CHAINAGE END (km)	16.850
SEGMENT LENGTH (km)	16.850

INFRASTRUCTURE RISK RATING (IRR) - TMR INFRASTRUCTURE RISK RATING MANUAL

DESCRIPTION	ATTRIBUTE	RISK SCORE	
Road Stereotype	2 Lane Undivided	3.7	IRR Table 2
Alignment	Curved	1.5	IRR Table 3
Lane Width	generally 3.0m - 3.5m	Medium	IRR Table 4
Sealed Shoulder Width	generally 0 - 0.5m	Very Narrow	IRR Table 5
Carriageway Risk Score		1.79	IRR Table 6
Roadside Hazard Risk - LEFT	Severe	2.8	IRR Table 7
Roadside Hazard Risk - RIGHT	Severe	2.8	IRR Table 7
Land Use	Remote rural	1	IRR Table 8
At-Grade Intersection Density (per km)	1 to <2	1.15	IRR Table 9
Access Density (per km)	5 to <10	1.06	IRR Table 10
Traffic Volume AADT (veh/day)	1800	1.4	IRR Table 11
IRR SCORE	1.676435787		
IRR BAND	HIGH		IRR Table 1

CRASH RISK RATING (CRR) MUTCD Part 4 CI 5.1.2

DCA GROUP	DESCRIPTION	INCIDENTS	SI	
1	Intersection, from adjacent approaches		1	0.73
2	Head-on			
3	Opposing vehicles, turning			
4	Rear-end	1		0.37
5	Lane change			
6	Parallel lanes, turning			
7	U-turn			
8	Entering roadway			
9	Overtaking, same direction			
10	Hit parked vehicle			
11	Hit train			
12	Pedestrian			
13	Permanent obstruction on carriageway			
14	Hit animal			
15	Off carriageway, on straight			
16	Off carriageway, on straight, hit object			
17	Off carriageway, on straight			
18	Out of control, on curve			
19	Off carriageway, on curve, hit object			
20	Out of control, on curve			
21	Other			
CRR SCORE	3.3121207			MUTCD P4 Table C1
CRR BAND	LOW			MUTCD P4 Table C2

ROAD RISK METRIC (CRR) MUTCD Part 4 CI 5.1.4

IRR BAND	HIGH	
CRR BAND	LOW	
ROAD RISK METRIC	HIGH	MUTCD P4 Table 5.1.4

ENVIRONMENTAL CONTEXT CATEGORY	Rural	MUTCD P4 Table 5.1.5(A)
FUNCTIONAL CLASSIFICATION	Trunk Collector	MUTCD P4 Table 5.1.5(D)
RECOMMENDED RASL (km/h)	80	MUTCD P4 Table 5.1.5(D)

RISK ASSESSED SPEED LIMIT (RASL)	80km/h
---	--------

Table 5.1.5(D) – Risk Assessed Speed Limits: Roads in a rural environment

Road class	Functional description	Road Risk Metric		
		Low	Medium	High
Access / local street	Only for roads that provide direct access to property	80 km/h	70 km/h	60 km/h
Collector road	Used for access to properties and other roads and for local neighbourhood access within the rural residential areas, generally used only by owners of properties along those roads and by other people living within the rural areas	80 km/h	70 km/h	60 km/h
Trunk collector road	Used to travel through an area or as a major connector into an area, significant use by motorists from outside the area	100 km/h	100 km/h	80 km/h
Arterial road	These roads form the principal avenues for communications between major regions including direct connections between cities, between a capital city and adjoining states and their capital cities, between a capital city and key towns and between key towns	100 km/h	100 km/h	90 / 80 ¹ km/h